

**CONFIG :H7910-H4NQ5-B5140**

**Manual Isolation delay: 40 Seconds**

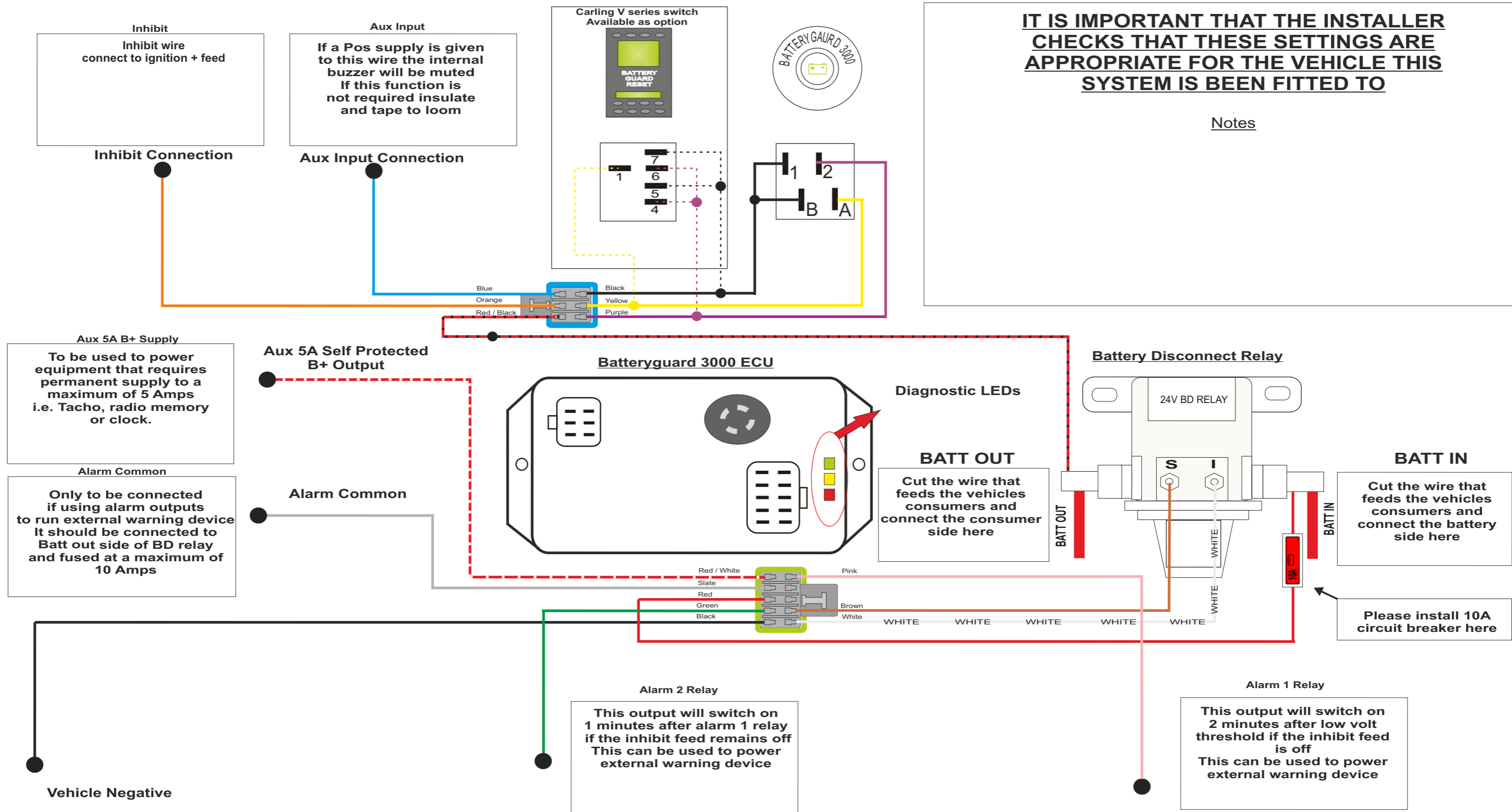
**Alarm 1: N/O Active 2mins after LVT**

**KIT No : K96**

**Low voltage threshold: 24.1**

**Alarm 2: N/O Active 3mins after LVT**

THESE INSTRUCTIONS ARE ONLY TO BE USED AS A GUIDE. IT IS THE INSTALLERS RESPONSIBILITY TO VALIDATE FOR EACH INSTALLATION  
INTELLITECMV Ltd CAN NOT BE HELD RESPONSIBLE FOR VEHICLE VARIATIONS



Reason for Issue Change: Change 10A Fuse to 10A Circuit Breaker



Draw number : BG3K-000801

Drawn : S Kelley

Revised: 19/10/23 JH  
Issue Level: C

Check : T.H.   
D.Y.

Date :13-1-09

Scale : NTS

Filepath :

**Intellitec Technical Services**  
Speciality Vehicle Electronics Division

Technical Helpline  
0151 4828970

Title: 24 VOLT 100 AMP STANDARD

